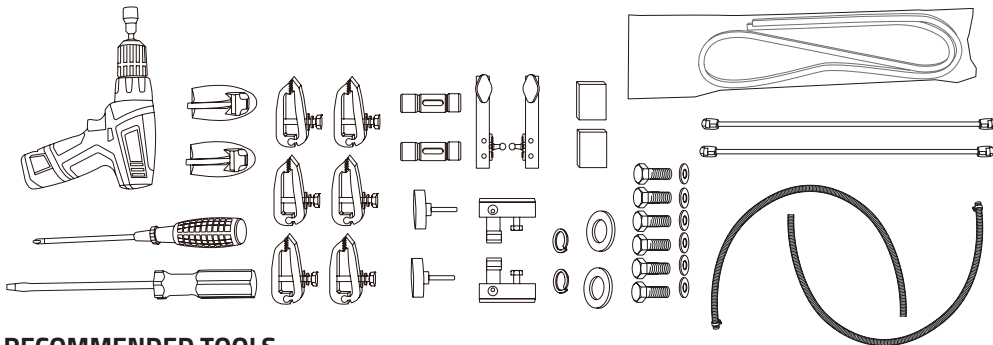
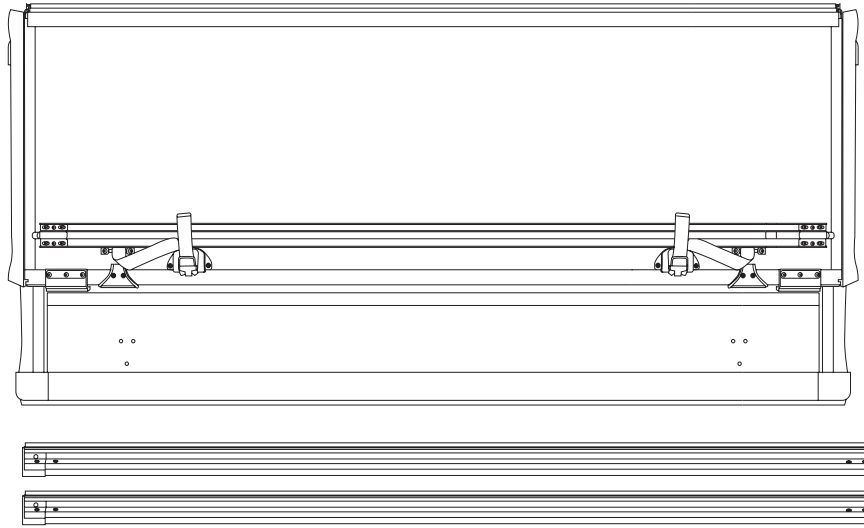


Before You Start

Make sure you have all the parts and hardware included.



RECOMMENDED TOOLS

- 9/16- inch Wrench or Socket
- Slotted Screwdriver
- Phillips Screwdriver

PARTS INCLUDED IN YOUR KIT

- 1 x Hard Folding Cover Assembly
- 1 x Bulkhead Seal
- 1 Pair Rails (L&R)
- 2 x Black Drain Tubes
- 2 x Foam Pads (50x50mm)

1 HARDWARE BAG INCLUDING

- 6 x Clamps (8 for 8ft truck beds)
- 2 x Bolts
- 2 x Knobs (Thumb Screws)
- 4 x Machine Screws

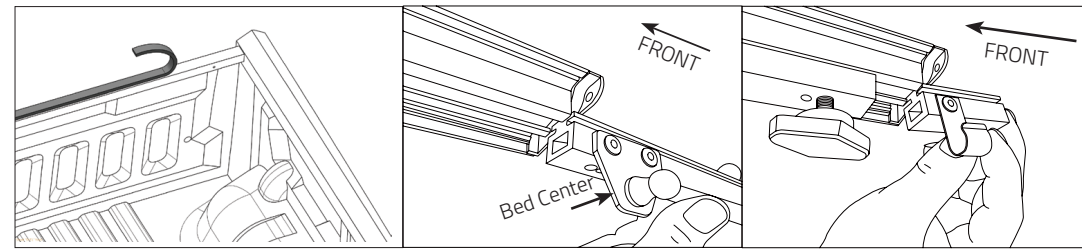
X1 HARD TRIFOLD TONNEAU COVER

TEAMZ
TRUCK BED COVERS and MORE

Any components missing or damaged?

We're here to help!

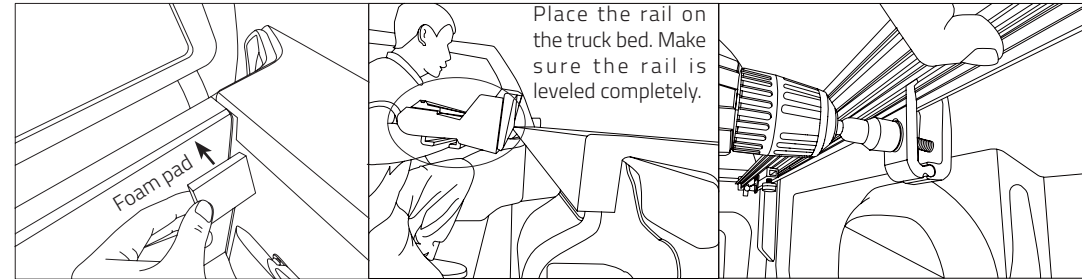
Please reach out to our customer service team:
By Phone: 1 (855) 678-3269 / 1 (855) 67 TEAMZ
By Email: service@teamzauto.ca
1100 Invicta Dr Unit 8, Oakville, ON L6H 2K9



If the front edge of your truck bed sits below the side rails as shown, install the provided bulkhead seal. Before applying, wipe the painted surface with isopropyl alcohol.

If your truck has a drop-in bedliner, the seal will not be needed.

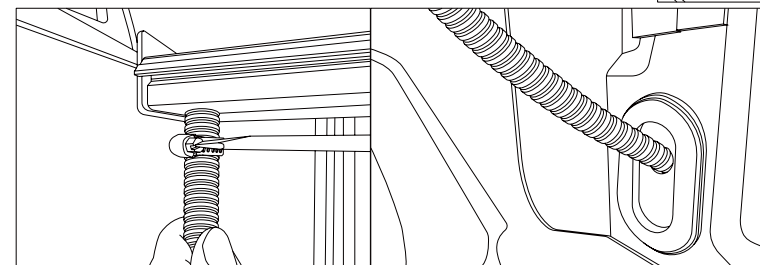
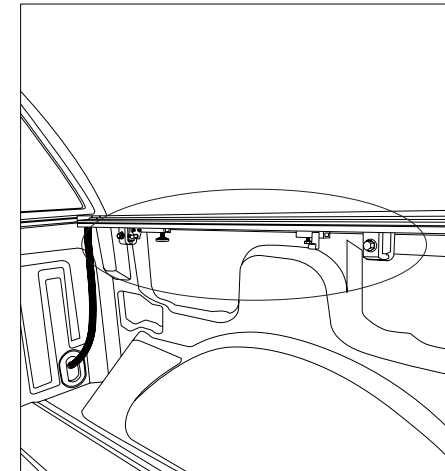
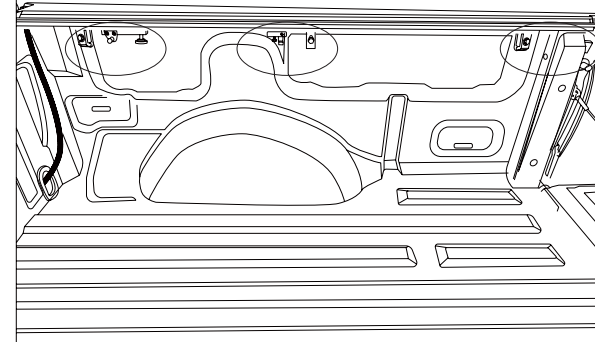
Put the strut slider in turn in the aluminum alloy side rod track.
*Please pay attention to distinguishing the LEFT and RIGHT rails and the FRONT and REAR.



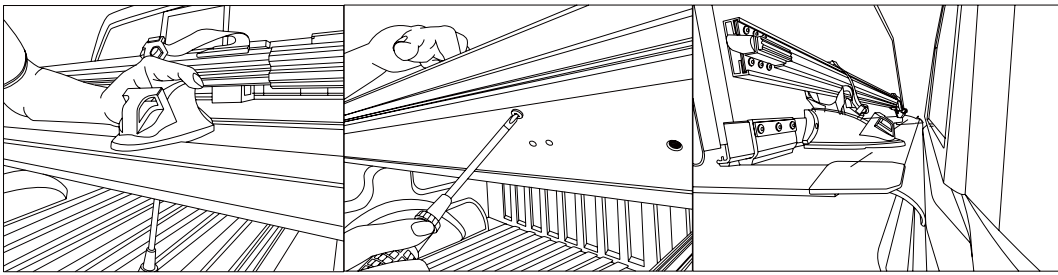
Place the rail on the truck bed. Make sure the rail is leveled completely.

Install the first marked clamp on the first spot of the rail, typically near the front end

Place the 2nd clamp near the center of the rail, and the 3rd clamp approximately 6 inches from the tailgate. Make sure the strut slides are located between the 1st and 2nd clamps.



Link the side rod aqueduct and tighten it

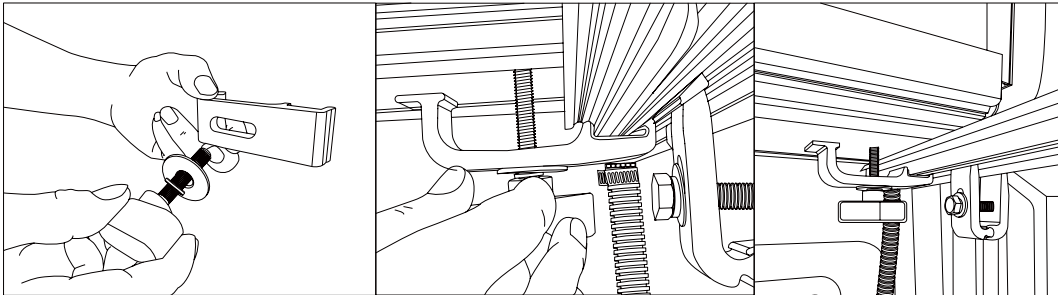


Tighten the front buckle using a screwdriver

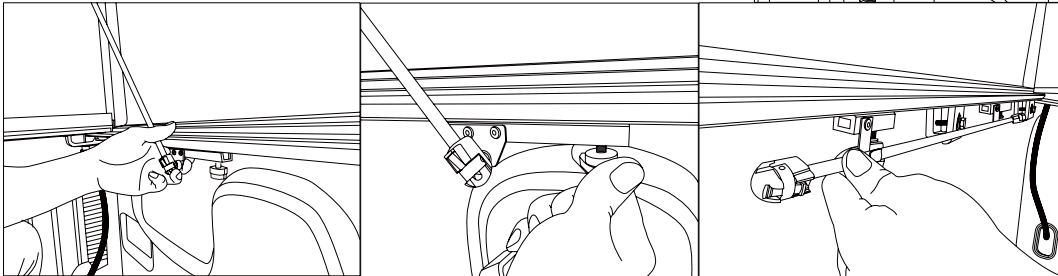
Place the cover on the bulkhead and adjust the position

Pass the screw through the spring washer, flat washer, and C-clamp in turn

Ensure that the gap of the C-clamp is stuck at the bottom of the aluminum alloy side rail. Make sure it is fixed firmly

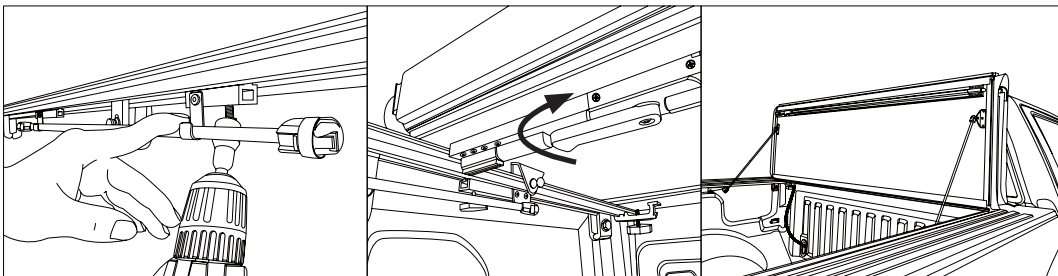


Open the bar, attach it to the slide, and tighten the slide lock nut



Fixed the bar slider per bar position and tightened

Open the handle and complete the installation



IMPORTANT

Re-tighten the front / cab clamps after the first week of driving the vehicle.
Also periodically check the clamps to ensure they are secure.

IMPORTANT NOTICE

While driving, the cover must be completely flat and secure with all latches closed.
If folded up all panels must make sure all support rods are fully secured and the panels secured at the buckle.
DO NOT DRIVE with the cover partially opened.

WARRANTY AND MAINTENANCE

TEAMZ X1 HARD TRIFOLD TONNEAU COVER WARRANTY POLICY

COVERAGE: Lifetime Limited Warranty (Please refer to the website for specific policies)

TEAMZ AUTO, warrants to you, the original retail purchaser, that your TEAMZ X1 hard folding tonneau cover is free from defects in the material and workmanship. The warranty will be void if the product has been damaged by accident, neglect, abuse, inappropriate use, improper installation, or acts of God. TEAMZ AUTO may, at our sole discretion, either repair or replace products that prove to be defective.

WARRANTY PERIOD:

This warranty shall apply for 3 years as long as the TEAMZ X1 hard folding tonneau is in the possession of the original purchaser on the original truck and a proof of purchase (original sales receipt) is submitted.

LIMITATIONS:

The above warranty shall apply only if ALL of the following conditions are met.

1. The original purchase only is covered and is not transferable.
2. The TEAMZ X1 hard folding tonneau cover is on the original owner's truck.
3. The TEAMZ X1 hard folding tonneau cover is properly installed.
4. The TEAMZ X1 hard folding tonneau cover has not been modified.
5. Consequential damages, including damage to cargo or truck bed, are not covered.

NOT COVERED UNDER WARRANTY:

1. Blown Off Covers:
 - A. TEAMZ AUTO will not warranty a TEAMZ X1 hard folding tonneau that comes off the truck while driving or by wind.
 - B. Consumer responsibility to check clamps before driving.
2. Paint damage to your truck.
3. Damage resulting from improper or careless unpackaging. Never open packaging with a box cutter or any sharp instrument as it may scratch or damage contents.
4. Damage caused by a hyperextending panel hinge is usually caused by hauling cargo taller than the truck bed sidewall when the cover is in the "closed" position.
5. Damage caused by improper use, operation outside the product's specifications, or use other than the cover's intended application.
6. Failure to install and operate equipment according to the guidelines put forth in the installation manual.

THIS EXPRESS LIMITED WARRANTY IS THE SOLE AND EXCLUSIVE WARRANTY PROVIDED BY TEAMZ AUTO FOR THIS PRODUCT. TEAMZ AUTO DOES NOT MAKE AND HEREBY DISCLAIMS ANY AND ALL OTHER EXPRESS OR IMPLIED WARRANTIES, INCLUDING BUT NOT LIMITED TO THE IMPLIED WARRANTY OF MERCHANTABILITY AND THE IMPLIED WARRANTY OF FITNESS FOR A PARTICULAR PURPOSE.

REPLACEMENT PARTS:

Email: service@teamzauto.ca

SAFETY & CARE TIPS:

1. Take care of your equipment.
2. Periodically check your clamps for proper tension and make sure they are clamped down before traveling.
3. While driving, the cover must be completely flat and secure with all latches closed.
If folded up all panels must make sure all support rods are fully secured and the panels secured at the buckle.
4. Periodic cleaning with mild soap and water only. Avoid the use of abrasive pads or harsh cleaners as they can dull the finish. Avoid the use of chemicals and harsh fluids as they can damage hinges and seals voiding the warranty

CLAIMS:

If you have any warranty issues, please email service@teamzauto.ca.